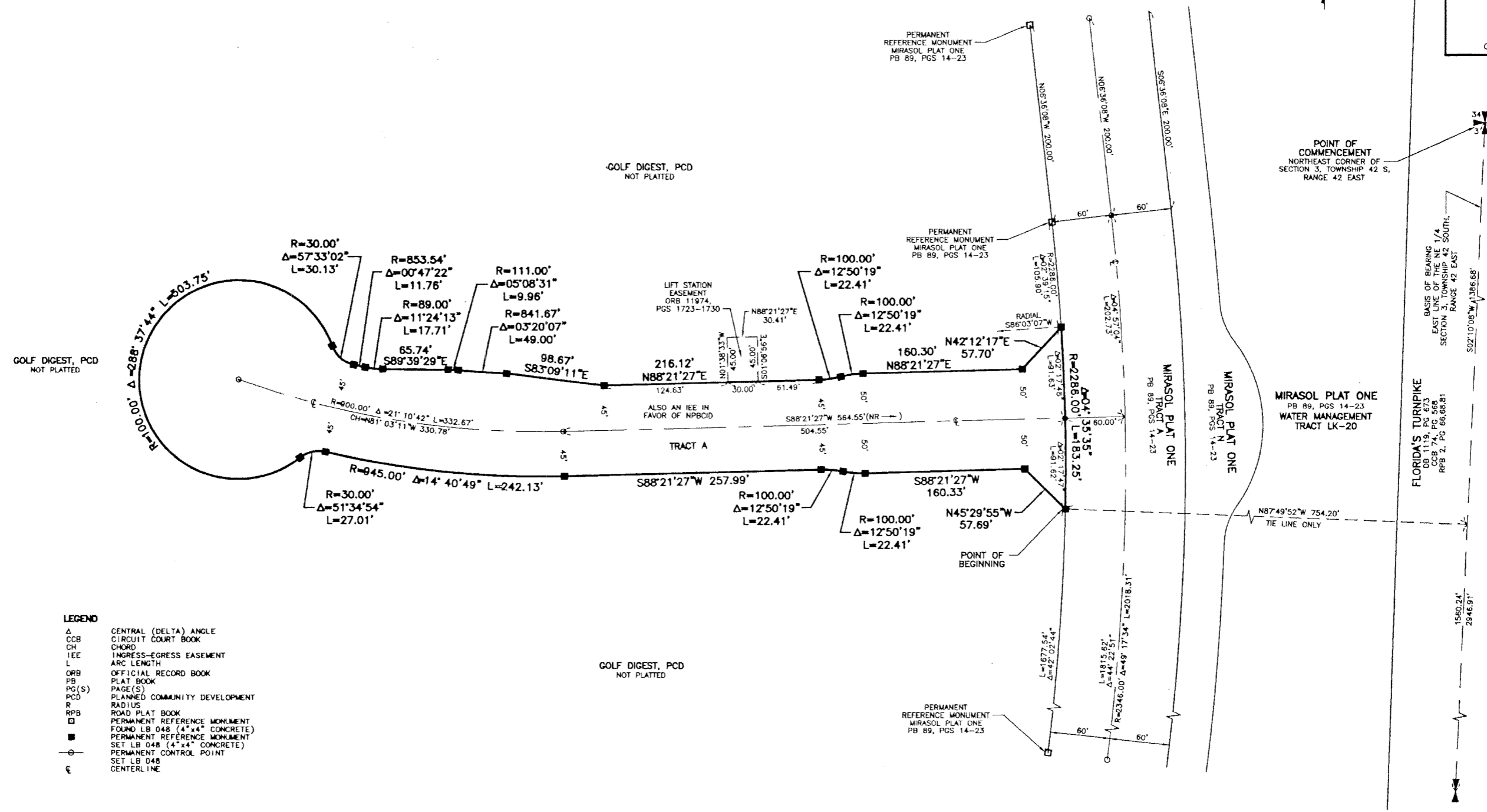


MIRASOL PLAT THREE

PART OF GOLF DIGEST P.C.D.
SECTION 3, TOWNSHIP 42 SOUTH, RANGE 42 EAST,
CITY OF PALM BEACH GARDENS,
PALM BEACH COUNTY, FLORIDA
SHEET 3 OF 3

STATE OF FLORIDA
COUNTY OF PALM BEACH
THIS PLAT WAS FILED FOR
RECORD _____ DAY OF _____
THIS _____ DAY OF _____
AD, 2001 AND DULY RECORDED
IN PLAT BOOK _____ ON PAGES _____
AND _____ ON PAGES _____
DOROTHY H. WILKEN, CLERK
BY: _____, D.C.

CIRCUIT COURT SEAL



GOLF DIGEST, PCD
NOT PLATTED

GOLF DIGEST, PCD
NOT PLATTED

GOLF DIGEST, PCD
NOT PLATTED

- LEGEND**
- Δ CENTRAL (DELTA) ANGLE
 - CCB CIRCUIT COURT BOOK
 - CH CHORD
 - IEE INGRESS-EGRESS EASEMENT
 - L ARC LENGTH
 - ORB OFFICIAL RECORD BOOK
 - PB PLAT BOOK
 - PG(S) PAGE(S)
 - PCD PLANNED COMMUNITY DEVELOPMENT
 - R RADIUS
 - RPB ROAD PLAT BOOK
 - PERMANENT REFERENCE MONUMENT
FOUND LB 048 (4" x 4" CONCRETE)
 - PERMANENT REFERENCE MONUMENT
SET LB 048 (4" x 4" CONCRETE)
 - PERMANENT CONTROL POINT
SET LB 048
 - ℄ CENTERLINE

S:\1001\1001003\1003\1003.dwg 02/28/01 11:06:34 AM EST

REV.: 02-28-01
CAD FILE:
TAYLPL03.PLD3RPO2

THIS INSTRUMENT WAS PREPARED BY MARY HANNA CLODFELTER, P.S.M. IN THE OFFICES OF MOCK, ROOS & ASSOCIATES, INC., 5720 CORPORATE WAY, WEST PALM BEACH, FLORIDA 33407.

SCALE:
1" = 50'
P.A. NO.:
99320.00
DATE:
SEPTEMBER, 2000
DRAWING NO.:
42-42-03-24

FLORIDA L.B. NO. 48

MOCK ROOS
ENGINEERS PLANNERS

5720 Corporate Way, West Palm Beach, Florida 33407
(561) 683-3113, fax 478-7248

MIRASOL PLAT THREE
PART OF GOLF DIGEST P.C.D.
SITUATE IN SECTION 3,
TOWNSHIP 42 SOUTH, RANGE 42 EAST,
CITY OF PALM BEACH GARDENS,
PALM BEACH COUNTY, FLORIDA